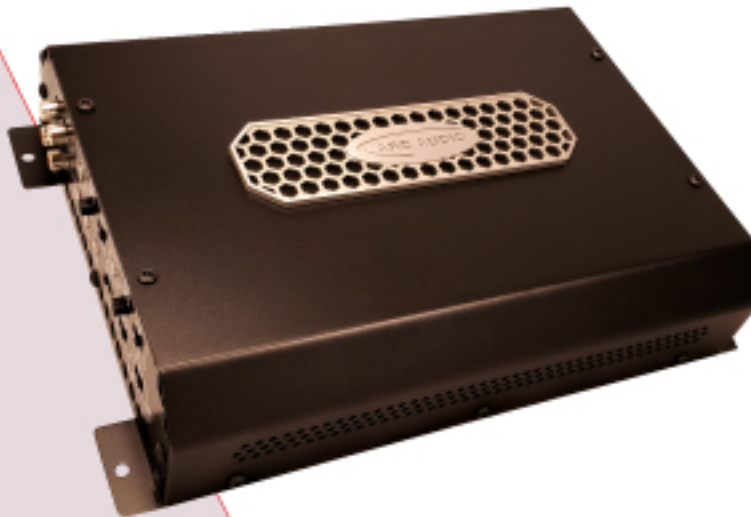


# KS300.4V3

## KAR SERIES AMPLIFIERS



**Class G/H Performance**  
**Audiophile Quality**  
**Proven Design**

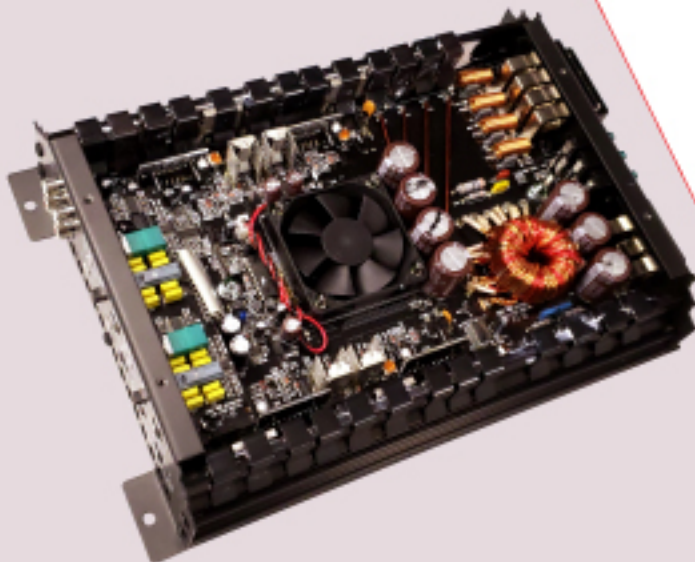
**MSRP \$599.00**

When people talk to us about the KAR Series line of amplifiers the two words we always hear are "Solid", "Proven", and "Quality". These very reasons define why we took the steps necessary to give a fresh start to a classically proven line that has helped drive ARC Audio as a go to line for car audio enthusiasts and music lovers worldwide.

In the huge world of Class-D amplifiers many people forget about the efficiency and sonic benefits of Class-G/H amplifiers. However, those sub compact Class-D amplifiers may be cute to look at but there are other things to consider. If your amplifier doesn't sound any better than the stock radio what are you really gaining? The KS series amplifiers are a totally "out of the box" rethink of what an amplifier can be.

By taking a proven but underutilized Pro Audio amplifier class and bringing it up to date with modern components we can achieve uncompromising sound quality in a compact chassis that makes installation in even the most challenging cars and trucks a breeze.

Class G and Class G/H amplifiers offer the best of all possible characteristics. Power output, distortion, efficiency, heat, noise, size are all class leading specs with this design. But why does this class of amplifier perform so well? It's built for music, not test tones or noise. When an amplifier is playing music, even at full volume, due to its dynamic nature, it is only working above 1/2 power about 10% of the time. You only need full power during the very loud passages like





A single piece cast aluminum ARC Audio honeycomb pattered KAR Series V3 badge is the new symbol of quality on all V3 Series amps

the impact of a drum or the pluck of a bass string. The rest of the time your 700-watt amp is making less than 350 watts. That's where the KS amp's Class G/H design comes into play. It's like having 2 amps in one. A 400-watt amp is much smaller and produces a lot less heat. Then, in a fraction of a second, your amp becomes an 800-watt monster that is ready for any musical challenge. The trick to making this work is in striking a balance between switching the high-power section on and off. It takes the years of experience Nikola Engineering has to achieve this delicate balance.

The V3 difference? Simply, MORE POWER and an update look! We took one of our most popular designs and gave it a boost over its V2 predecessor. We're giving you more power per

channel while keeping the performance, reliability and sonic expectations that users have come to expect from ARC Audio. The KS 300.4 V4 truly is that SQ packed powerhouse that you have been asking for giving you the tools to create that live in car concert that you have been asking for without breaking the bank with ultra-high end audiophile amplifiers.

Contact your local ARC Audio retailer for ordering information.



## Specifications

### KS3004V3

4-Channels @ 4 Ohms-	120 Watts
4-Channels @ 2-Ohms-	190 Watts
2-Channels @ 4 Ohms-	380 Watts
2-Channels @ 2-Ohms-	(Not Recommended)
1-Channel @ 4 ohms (Bridged)-	(Not Recommended)
Frequency Response-	5Hz - 50kHz
Crossover Range-	55Hz - 5500Hz
Bass Boost-	+18dB @ 45Hz
S/N Ratio-	95dB
Input Sensitivity-	.220mV - 3.5V
Fusing-	3 x 30 Amps
Dimensions-	11.25"(L) 8.0"(W) 2.375"(H)



The 300.4V3 won't be alone for long. The entire KS Line will see a new, updated and improved life with more power, features, refinement and look in each model completing the family of KAR Series amps as we know it.

VISIT US AT:  
[WWW.ARCAUDIO.COM](http://WWW.ARCAUDIO.COM)