



# AXP

## Wi-Fi Control Module

The ARC Audio AXP Wi-Fi control accessory module is a simple solution to getting rid of all those pesky cables in your vehicle. The AXP Wi-Fi controller module allows users to connect their Wi-Fi enabled laptop loaded with the Pro-Series DSP Software to any Pro-Series DSP wirelessly.



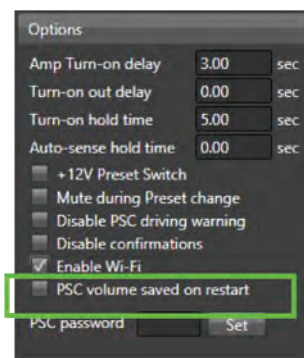
Once installed, the AXP requires use of either a Mobile Hot Spot or a Wi-Fi router connection to connect the two devices together. After initial setup and connection, the system will easily re-connect like a default (preferred) connection point.

1) To setup and connect your AXP Wi-Fi Module first, with the power turned off install your AXP Wi-Fi module into your Pro-Series equipped ARC Audio DSP into the AXP Port.

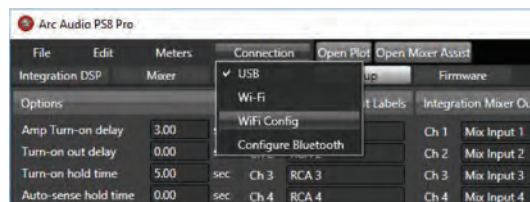


2) After the AXP module is installed into your processor turn it on and power up your software with the normal USB cable connection provided with your ARC DSP (This is required for initial setup)

3) After initial connection with the active software find and click on "Setup" Tab. Once you have selected the "Setup" tab find, locate and select the "Enable Wi-Fi" option. Once selected the check box to the left should be populated with a check icon in the options box.



4) Locate the "Connection" option at the top of the screen and select it. Once selected you will see a drop-down menu with several options. Locate and select "Wi-Fi Config" to access the Wi-Fi configuration panel.



5) If you are using your mobile device as a hotspot for this application please make sure that your hotspot is turned on and active. Please take note of the hotspot name and password for access to your hotspot as you will need it to connect your AXP module to this device. (Please note you may also use a wireless Wi-Fi router at you home or business for this process as well.)



6) Locate the Wi-Fi drop down menu on the right-hand side and find and select your hot spot or Wi-Fi router from the list of available Wi-Fi locations.

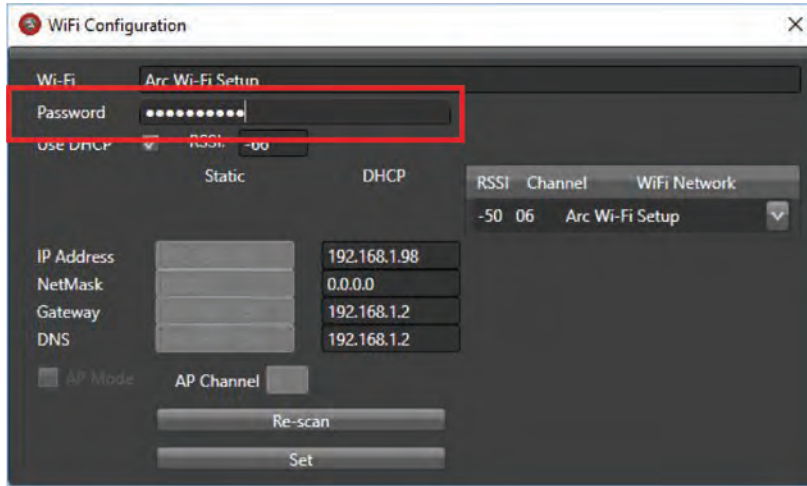
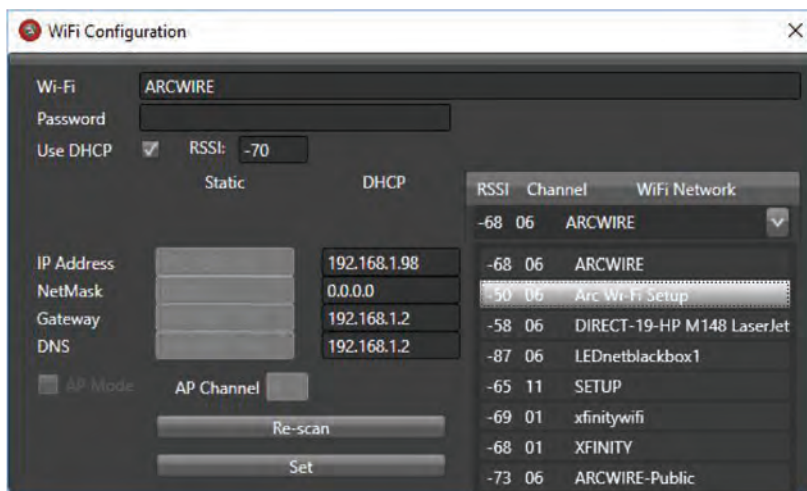
7) Next enter your Hotspot or Wi-Fi location password in the password box. Once you have entered the password click on "Set".

8) Now Turn off your processor and software and power the system back on with the USB cable disconnected.

9) Once the system is turned back on, with the USB disconnected, make sure your WI-Fi enabled computer or device is connected to the same Wi-Fi router or hot spot that your AXP is connected to.

10) Now, start your pro-series software and the system should auto-connect through the Wi-Fi network and the AXP module.

(NOTE: If you are using a mobile hotspot as your network connection for Wi-Fi please remember that some hotspots will default to off if not actively being used and may require you to reactivate it on your mobile device before being able to reconnect automatically.



Compatible  
**PRO-SERIES DSP**  
Products

**PS8-PRO**  
**PS8-50**  
**IPS8.8**